

REVISIONS

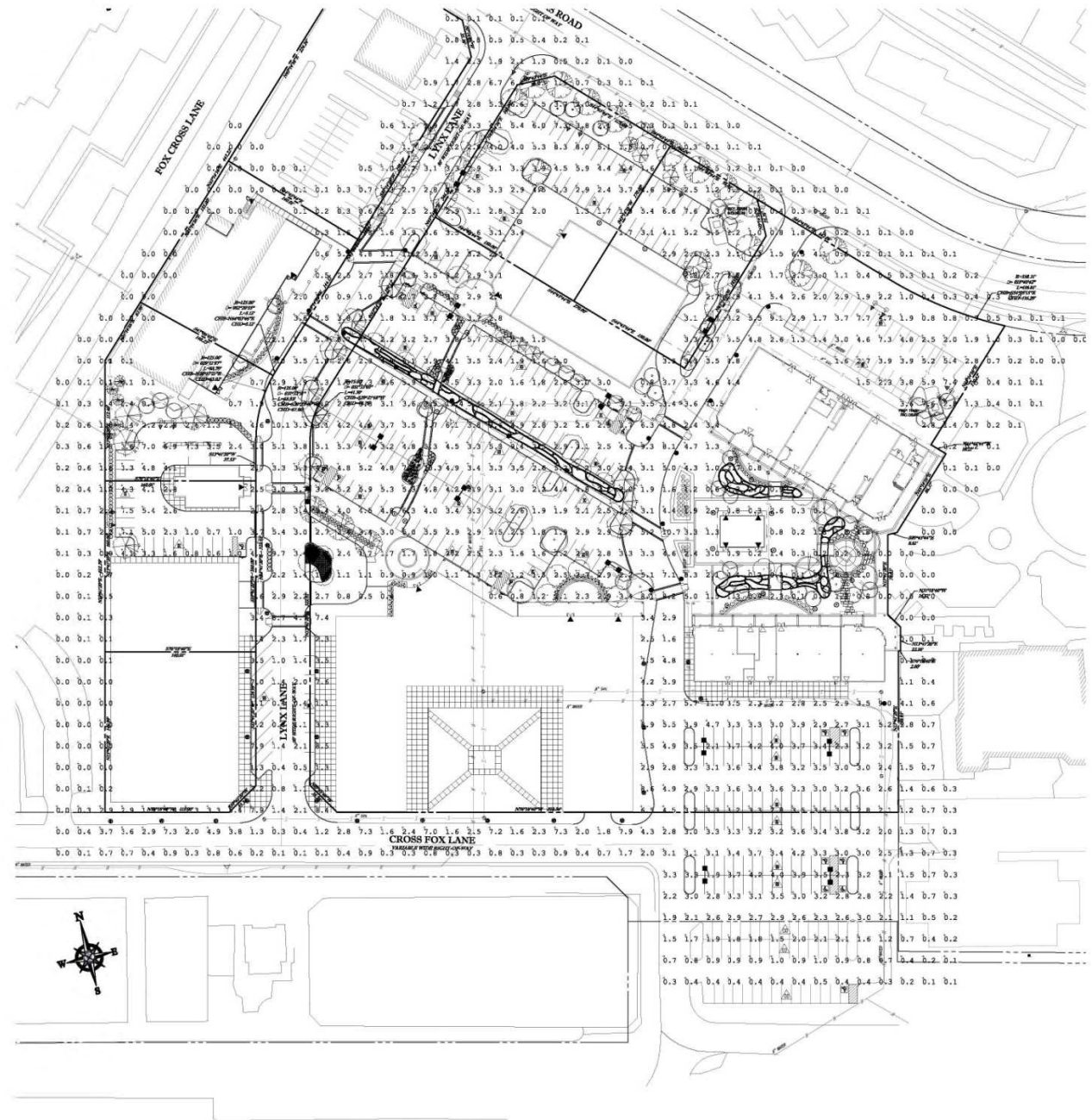
REV #	DATE	BY:
1	9/3/10	J.P.
2	4/26/11	J.P.
3	5/2/11	J.P.

Label	Avg	Max	Min	Avg/Max	Max/Min	Footcandle	Footcandle
DRIVE BOUNDARY	2.98	10.1	0.4	7.45	25.25	20	70
PARKING BOUNDARY	3.27	11.4	0.6	5.95	19.00		
RESIDENTIAL WALK AREA	3.25	8.9	0.4	8.13	22.25		
DETAIL WALK AREA	3.17	9.0	0.3	4.34	18.00		

Symbol	WILDE LAKE	COLUMBIA, MD	PM: DEAN	PLS: BASH CALL US FOR PRICING AT 1-800-633-8711
Symbol	Qty	Label	Total Lamp lumens	LED Description
	12	A	47000	0.900 WLS-FPM-3-400-WM-FPM-70 30' POLE 3' BASE
	7	B	47000	0.900 WLS-FPM-3-400-WM-FPM-70-02 30' POLE 3' BASE
	42	C	16000	0.800 WLS-80-5-170-FPM 12" MOUNTING HEIGHT
	30	D	5600	0.800 WLS-FPM-07W-70-02H

BASED ON THE INFORMATION PROVIDED, ALL DIMENSIONS AND LUMINAIRE LOCATIONS SHOWN REPRESENT RECOMMENDED POSITIONS. THE ENGINEER AND/OR ARCHITECT MUST DETERMINE APPLICABILITY OF THE LAYOUT TO EXISTING OR FUTURE FIELD CONDITIONS.

THIS LIGHTING PATTERN REPRESENTS ILLUMINATION LEVELS CALCULATED FROM LABORATORY DATA TAKEN UNDER CONTROLLED CONDITIONS UTILIZING CURRENT INDUSTRY STANDARD LAMP RATINGS IN ACCORDANCE WITH ILLUMINATING ENGINEERING SOCIETY APPROVED METHODS. ACTUAL PERFORMANCE OF ANY MANUFACTURER'S LUMINAIRE MAY VARY DUE TO VARIATION IN ELECTRICAL VOLTAGE, TOLERANCE IN LAMPS AND OTHER VARIABLE FIELD CONDITIONS.



WILDE LAKE
COLUMBIA, MD

WLS LIGHTING SYSTEMS
Consider the Impact!

PO BOX 100519
FORT WORTH, TX 76185
WWW.WLSLIGHTING.COM

WLS-6921 DATE - 8/31/10 SCALE: 1"=50'

800-633-8711

PM: DEAN

BY: J.P.

SHEET 8 OF 8